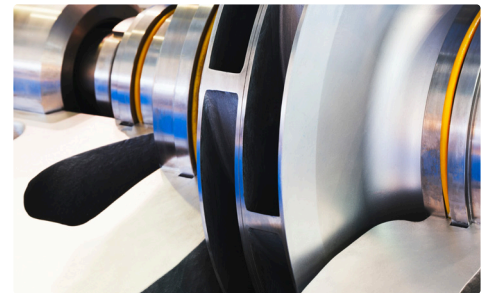
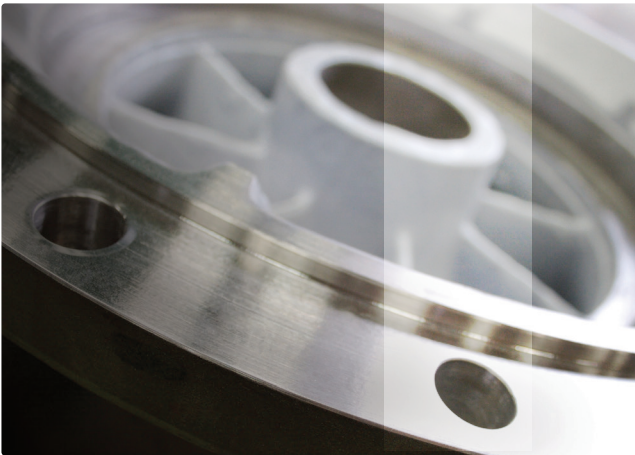


HYDRO AUSTRALIA



Engineering Pumps for Better Performance and Longer Life





The Hydro Difference

Hydro Australia began operating in October 1998. We provide quality engineering, pump refurbishing, rotating equipment and engineered spare parts and on-site services to clients in Australia, New Zealand, New Caledonia, Vietnam, Malaysia, and South East Asia.

Our philosophy is to work hand-in-hand with our clients in providing practical solution-based engineering to identify the root cause failure of rotating equipment.

Hydro Australia has an in-house engineering group, which is further supported by the Hydro groups worldwide mechanical and hydraulic engineering teams. Our workforce is skilled in and specialises in pumping equipment and associated ancillaries. We continually invest in our workforce and provide ongoing training to keep abreast in the ever-evolving area of pump engineering designs.

Our Parent Company

Hydro Inc., headquartered in Chicago, Illinois USA, was formed in 1969 and is recognized as the largest independent, non OEM pump service company in North America

In the 50+ years Hydro has been in business, Hydro has focused on developing engineering solutions and value added services to improve equipment reliability, extend equipment life and reduce overall life cycle costs. As an independent company, we are loyal to our customers – not to a brand.

Hydro is solution-driven and customer-focused. We seek to find the root cause of under performing pumps and engineer, upgrade and refurbish for better performance and longer life.



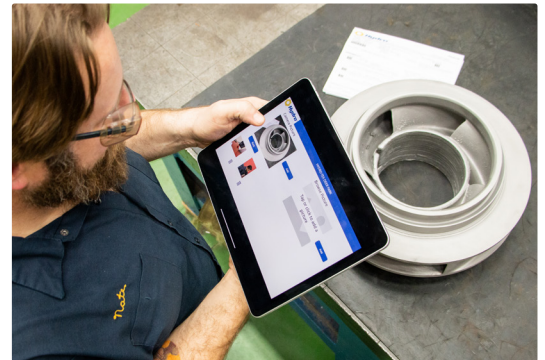
[View Introduction to Hydro Australia](#)

Quality Work Begins with a Quality Facility



Service Centre Technicians

Hydro Australia shop floor personnel are highly trained, committed, dedicated to quality and safety and have a broad range of experience working on all different makes of pumps and rotating equipment in both a workshop and on-site environment.



Equipment List

- Grit Blasting
- High Speed Dynamic Balancing Machine
- Long & Short Bed Lathes
- CNC Vertical Boring
- Horizontal Borer
- Co-ordinate Measuring Machine
- Painting
- Milling
- 12 Tonne Overhead Crane
- CNC Balancing Machine
- Measuring Machine
- Gripwell Slotting Machine
- Skilled Plant
- Hydrostatic Test Unit
- Lathe
- Compressor
- Spray Booth
- Cranes
- Grinder
- Borer
- Coupling
- Forklift
- Scissor Lift
- On-Site Tool Store
- Romer Arm
- Creaform 3D Scanner
- Performance Testing Equipment
- Rotor Alignment Machine
- Tensioning
- Boring Bar Package & Tooling
- CNC Mill/Turn Centre
- Welder
- Portable Ultrasonic Flowmeter
- Engineering Vice

Hydro's Open Door Policy

Communication and Trust Means Quality Results

Hydro maintains an "open door" policy, inviting unannounced visits by our customers to inspect our workshop and workmanship.

When pumps are in our shop, customers are encouraged to review work undertaken on the shop floor, speak with the inspectors, mechanics, and machinists that are working on your job.

With this open communication, we are able to build a high level of trust with our customers, sharing ideas and working as a team to solve pump problems. **Come on in.**



Comprehensive Services

- Removal and re installation of pumps and ancillary equipment
- Overhaul, refurbishment, re-rating and upgrading
- Dynamic balancing to tolerances more stringent than typical industry standards
- On site, in situ machining & welding
- Commissioning
- Expert engineering analysis of pumps
- Re-engineering of components
- Quality engineered spare parts
- Repair and refurbishment of gearboxes, fluid drives & special equipment
- Provision of quality, comprehensive "as found" assessment and "as built" assembly reports
- Solution-based fault finding
- Project Management
- In situ testing of pumps to identify bad actors and performance parameters
- Supply and monitoring of wireless condition monitoring

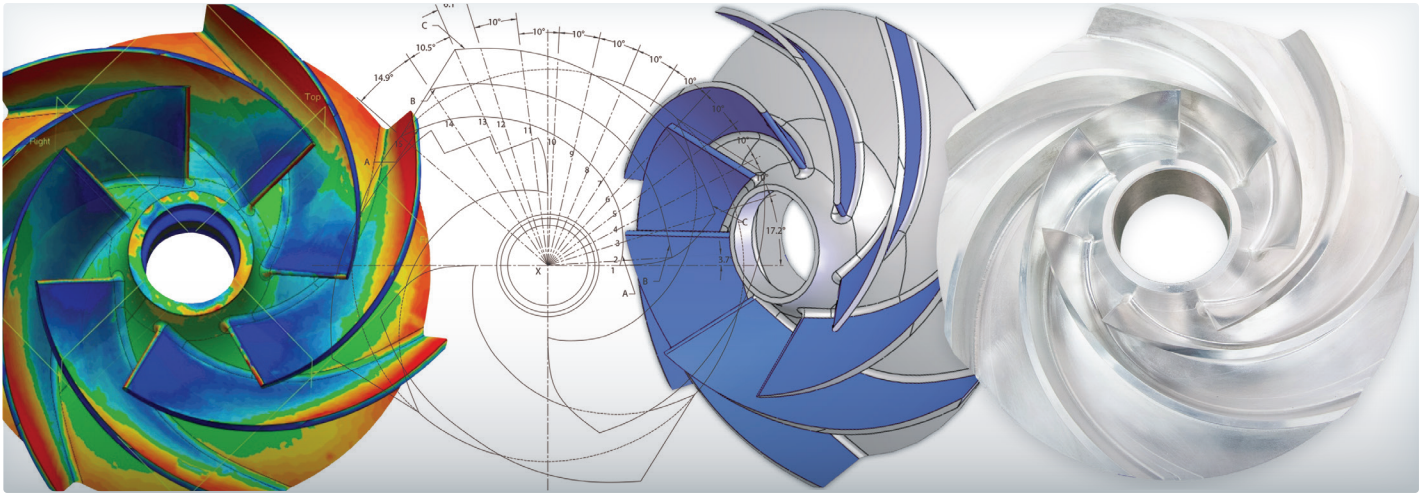
Reverse Engineering

Creaform 3D Scanner and Romer Arms

Whether it be in your facility or ours, we are able to reverse engineer a vast assortment of components using our Creaform 3D scanner and Romer Arm. This scanning creates the basis of reverse engineering and redesigning of components.



View Reverse
Engineering for the
Pump Aftermarket

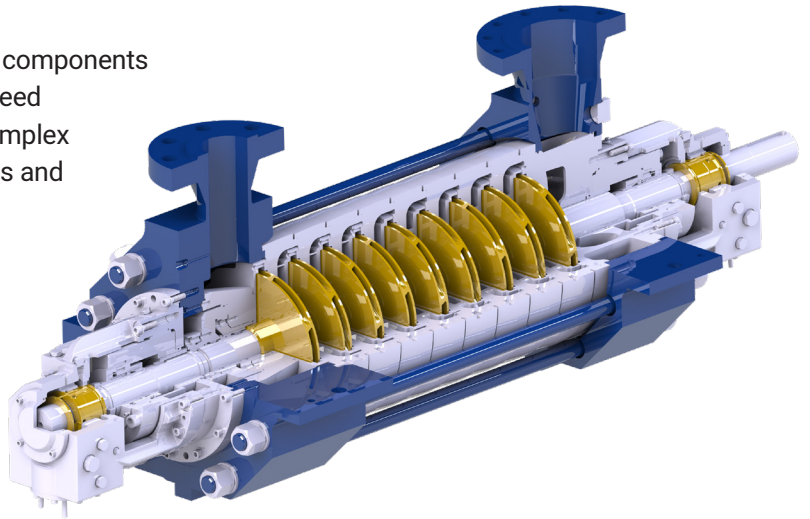


Engineered Spare Parts

Providing Hard-to-source Parts When It's Critical

Hydro Australia uses laser scanning technology to obtain all the intricacies of components. Although we can replicate parts we also improve them with upgraded materials, by using the latest technology and casting methods. Hydro Australia will produce products of the highest quality.

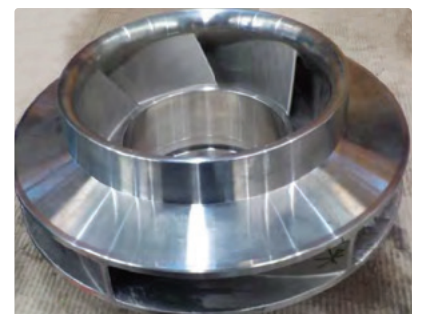
Hydro manufactures all required replacement pump components from machined rings, sleeves and bushes to high-speed forged shafts, composite materials and the more complex designs being impellers, water jackets, cases, volutes and all very detailed cast components.



Machined & fabricated diffuser, replacing a failed cast diffuser



Feed pump water jackets and feed pump impeller



Hydro's Balancing Standards

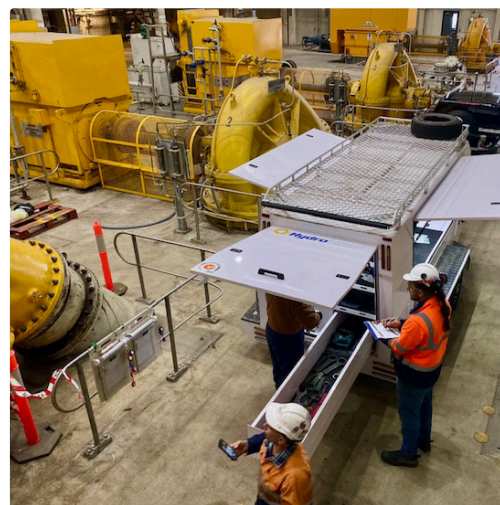
Hydro Australia facilities balance impeller and rotors in house to ISO and API standards.



On-Site Services

Hydro Australia's On-Site Field Service Experience Includes:

- Removal and install rotating equipment
- Commissioning
- Laser alignment
- In situ performance testing
- Engineering analysis
- System analysis
- On-site training
- Condition monitoring
- Project management



Hydro's Condition Monitoring

Ease of Use. Ease of Mind.



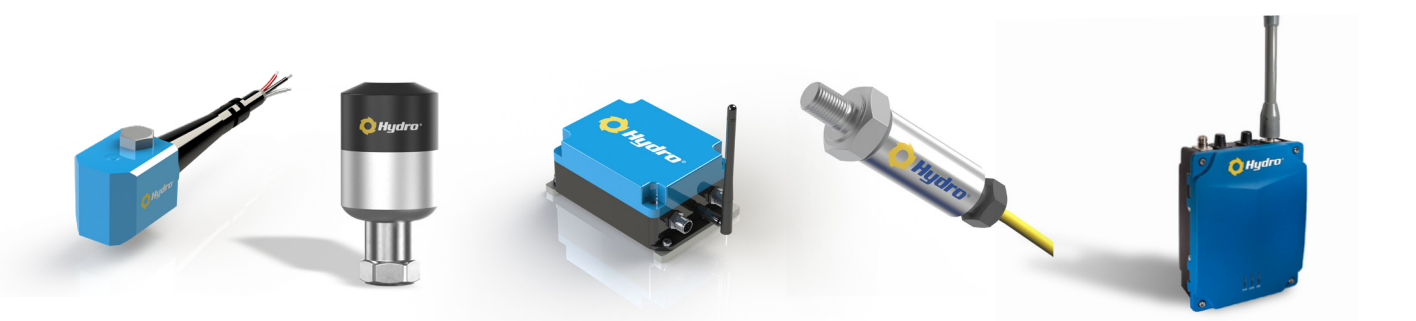
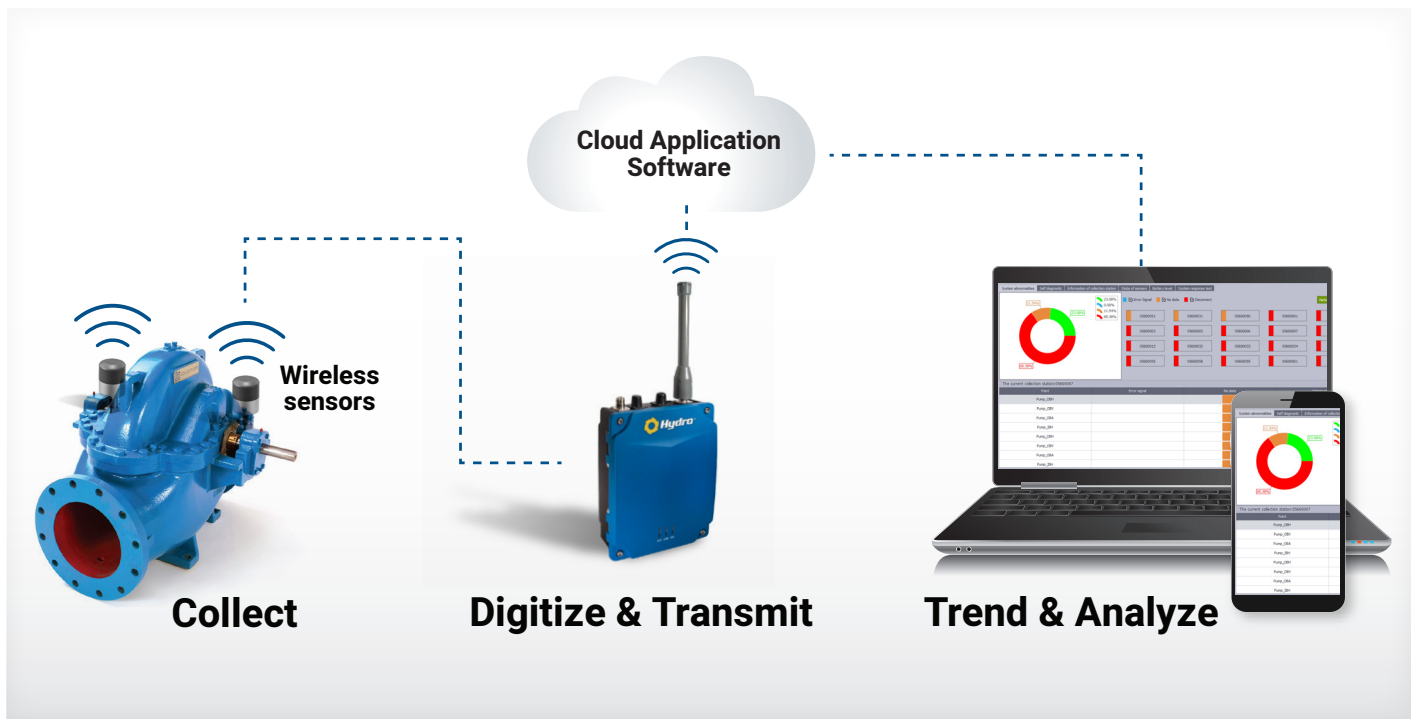
Prevent unexpected failures, costly downtime, and unnecessary repairs. Hydro has been hands-on for over half a century - a leader in pump and rotating equipment service and support. Our wireless condition monitoring system allows users to identify problems and prevent failures. Hydro Australia uses magnetically attached sensors and a wireless gateway that are continuously monitored, where the data can be accessed 24/7 via the internet by client staff and Hydro's Engineers.

There are many benefits including:

- Easy to retrofit on new or existing equipment and can be moved from pump to pump
- No complicated wiring required to existing plant
- Up to 60 sensors can be monitored through one gateway
- Safety – condition monitoring staff no longer need to be on site in hazardous situations
- Time & cost saving compared to traditional handheld walk around monitoring
- Alarms can be set and monitored by your staff or Hydro



[View Introducing Centaur](#)



Key Support Staff



Michael Cooper, General Manager

Michael joined the Hydro Australia team in 2005 and has worked in all facets of the business including pivotal roles in Engineering, Workshop supervisor, Sales and Management teams. Experience in the engineering dept. enables him to problem solve the majority of our customers technical concerns, enabling positive outcomes for clients. Michael has over 20 years experience in the pump industry.

<https://www.linkedin.com/in/michaelcooper-316109192/>



Tom Panoutsopoulos, Workshop Supervisor

Tom started with Hydro Australia in 2000 as a Mechanical Fitter and now manages our Morwell workshop. His role is job prioritisation, customer requirements and engagement, technical trouble shooting, job optimisation and ensures all work carried out by Hydro Australia meets stringent requirements of Health, Safety and Environmental standards. Tom is the conduit between the Sales Team, Management, Engineering and the customer, his expertise has developed strong and respectful long-term relationships with internal stakeholders and external suppliers and customers. <https://www.linkedin.com/in/tom-panos-133645b4/>



Greg James, Sales Manager – New South Wales, Queensland & New Zealand

Based in Sydney & commencing with Hydro in 2012, Greg supports our NSW, QLD & NZ clients. With over 35 years experience in Australia & New Zealand in State & National sales and service roles with two OEM's in the mechanical seal & pump industry; across the water, power generation, oil & industrial markets, with all types and styles of pumping equipment.

<https://www.linkedin.com/in/greg-james-8578251a0/>



David Brett, Sales Manager – Western Australia, Northern Territory

David commenced with Hydro Australia in 2013 and is based in Perth supporting our WA & NT clients. With over 40 years experience in the pumping industry including roles within Sales, Service & Management and covering many industry sectors allows him to draw on these experiences to support our customers. David is professionally driven by providing customers with the best service/solutions and developing long lasting relationships.

<https://www.linkedin.com/in/david-brett-7b113330/>



Louise Noonan, Sales Manager – Victoria, South Australia & Tasmania

Louise commenced with Hydro Australia in 2024 and is a passionate sales professional with 16 years experience in the pump industry, working for a global manufacturer. She has broad knowledge, technical capabilities & on-site experience with both pumps & seals.. She draws on her knowledge, experience & exceptional communication skills, to offer high quality service & solutions to her customers.

<https://www.linkedin.com/in/louise-noonan-63949b123/>



Alan Goicoa, Engineering Manager

Alan joined Hydro Australia in 2000 and is responsible for the engineering review of every job, reverse engineering, design of new components, production of all drawings in Solid works format in conjunction with our other five Morwell & Vietnam based engineers and draftsman. Alan holds a Bachelor of Engineering.

<https://www.linkedin.com/in/alan-goicoa-04a85130/>

Hydro's Service Centre Locations



UNITED STATES

ATLANTA
BEAUMONT
CHICAGO
DEER PARK
DENVER
HOUSTON
LOS ANGELES
PHILADELPHIA

INTERNATIONAL

AUSTRALIA
CANADA
ENGLAND
FRANCE
INDIA
OMAN
UAE
VIETNAM

Engineering Pumps for Better Performance and Longer Life

Contact

Head Office & Workshop

8 Minchington Road Morwell, Vic 3840

Ph. 03 51650390

sales@hydroaustralia.com.au

Darwin Workshop

23 Beresford Road
Yarrowonga, NT 0830

Ph. 0427 291 388

sales@hydroaustralia.com.au

Vietnam Workshop

68 Bát Nàn, Phường Bình
Trung Tây, Quận 2, Thành phố
Hồ Chí Minh 700000

sales@hydroaustralia.com.au

Vic, SA & Tas

Louise Noonan

Ph: 0412 858 159

NSW & QLD

Greg James

Ph: 0439 932 037

NT & WA

David Brett

Ph: 0427 291 388





sales@hydroaustralia.com.au | hydroaustralia.com.au

